

Monthly Update: *Training Center*

sears



BOSCH
Invented for life

Guide to Bosch Dishwasher Cycles & Options

With a variety of cycles and options to choose from, we have a cycle to fit your customer's dishwashing needs.

Dishwasher Cycles:

Heavy: Best for cleaning items with baked-on food or grease. These dishes would normally require soaking.
Cycle Time: 110-135 min. *Wash Temperature:* 150-160°F.
Rinse Temperature: 162°F

Auto: With our most complex soil sensing capability, this cycle is perfect for use with mixed loads of dishware and varying amounts of food soil. This is the most flexible cycle and is a good choice for everyday use.
Cycle Time: 110-135 min. *Wash Temperature:* 150-160°F.
Rinse Temperature: 162°F

Normal: Thoroughly cleans a full load of normally soiled dishes. *Cycle Time:* 130-135min. *Wash Temperature:* 131°F.
Rinse Temperature: 140-156°F

Rinse: Allows you to rinse food soil off of a partial load and hold the dishes in the dishwasher until you are ready to run a full load. Do not use detergent in this cycle.

Glass: A cycle for lightly soiled dishes, ideal for temperature sensitive items or cutlery. In this cycle, the temperature is reduced to help prevent dishes from becoming damaged. It is especially helpful to reduce a cloudy or etched appearance on glasses.

Express: Cleans lightly soiled dishes and reduces overall wash time. Use this cycle to clean glasses and dessert dishware that may need to be reused at the same event. *Cycle Time:* 30 min. *Wash Temperature:* 113°F. *Rinse Temperature:* 122°F

Eco: Best for delicate dishes and glasses, the Eco cycle lowers temperature and cycle length to decrease energy usage. *Cycle Time* 80-85 min. *Wash Temperature:* 113-122°F. *Rinse Temperature:* 144°F

Dishwasher Options:

Sanitize: Available only in the Heavy, Auto and Normal cycles. The sanitize LED will light when sanitation requirements are met. The technical sanitation measures may also improve the drying results.

Delicate: Available only in the Heavy, Auto and Normal cycles. This cycle is best used for lightly soiled items with easy to remove food soils.

SaveTime: Reduces cycle time by up to 25% while maintaining cleaning performance.

ExtraShine™: Used in combination with a wash cycle (except Rinse), the Extra Shine option raises the temperature and extends the drying time to further enhance drying results and provide a brilliant shine.

Half Load: For washing small, lightly soiled loads that fill approximately half of the dishwasher's capacity. Dishes can be placed on all levels of the dishwasher.

Delay: Allows you to delay the start time of your dishwasher up to 24 hours.

Tip: For best drying results, we recommend: Auto cycle, using a Rinse-aid, and either Sanitize or Extra shine option

For any additional questions on cycles & options, please contact our product specialists through our sales support website: www.askboschsears.com Live Chat: Mon-Fri 8:30AM to 6:00PM EST
Outside of chat hours? Submit a question and receive a response within 24 Hours.

Monthly Update: Training Center



BOSCH
Invented for life

Dishwasher Step-up Chart

New Bosch Dishwashers Step-Up Guide

Visit www.sears.com/Bosch or Bosch Full Line catalog for complete dishwasher assortment.



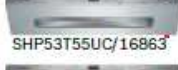
Model shown:
SHX4AT55UC/
16813



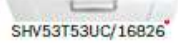
Model shown:
SHE53T55UC/
16063



SHX53T55UC/16823



SHP53T55UC/16863



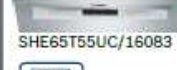
SHV53T53UC/16826



Model shown:
SHP65T55UC/
16873



SHX65T55UC/16843



SHE65T55UC/16083



Model shown:
SHX68T55UC/
16833



SHE68T55UC/16803



SHV68T53UC/16836



Ascenta® Series*	300 Series	500 Series	800 Series
24/7 Overflow Protection	+ 24/7 AquaStop®	+ Third Rack	+ Eco Cycle
Long Silverware Basket	Long Silverware Basket	24/7 AquaStop®	+ Vase holder, Small Item Clips
14 Place Settings	+ 15 Place Settings	Long Silverware Basket	Third Rack
RackMatic® Adjustable System	Manual Adjustable System	+ 16 Place settings	24/7 AquaStop®
InfoLight®**	InfoLight®**	RackMatic® Adjustable System	Long Silverware Basket
Electronic Controls	Electronic Controls	InfoLight®**	16 Place Settings
4 Cycles / 4 Options	4 Cycles / 4 Options	Electronic Controls	RackMatic® Adjustable System
SS Tub w/ PP***	+ Deeper SS Tub	+ 5 Cycles / 5 Options	InfoLight®**
		Deeper SS Tub	+ Capacitive Touch Controls
			+ 6 Cycles / 5 Options
			Deeper SS Tub

Ascenta® & Up InfoLight®** 49 dBA	300 Series & Up Deeper Stainless Steel Tub 46 dBA	500 Series & Up Third Rack 44 dBA	800 Series Touch Control 44 dBA
--	--	--	--

Innovative Bosch features

Self-Latching Door

Door holds firm at any position and automatically shuts at less than 20 degrees, allowing for a secure hands-free close.

InfoLight®

Bosch dishwashers are so quiet you may not know they are on. That's why there is InfoLight, a small red light projected onto the floor to indicate that the dishwasher is running.

RackMatic® Adjustable System

Adjust upper rack in just one step, even when loaded. Set to three different heights and allow for up to nine rack positions.

Extra Shine

Add to any cycle for increased dish shine.

24/7 Overflow Protection

Automatically shuts down operation if a leak is sensed. It even works 24/7 and can turn itself on.

24/7 AquaStop® System

Works similar to the 24/7 Overflow Protection but includes a fully enclosed base underneath the dishwasher for added protection.

Bosch's commitment: Information & help you need, when you need it

For any questions on Bosch dishwashers, please contact our product specialists through our sales support website: www.askboschsears.com Live Chat: Mon-Fri 8:30AM-6:00PM EST
Outside of chat hours? Submit a question and receive a response with in 24 Hours.

Easily access the website through your web browser at: www.askboschsears.com

- Ask questions
- Order parts
- Download manuals
- View current promotions
- Order POP & Catalogs
- View product training